

Features

- Resistant to corrosions and chemicals
- Rugged design
- User-friendly
- Reusable
- Submersible up to 100'
- Programmable start time
- Powerful software simplifies analysis

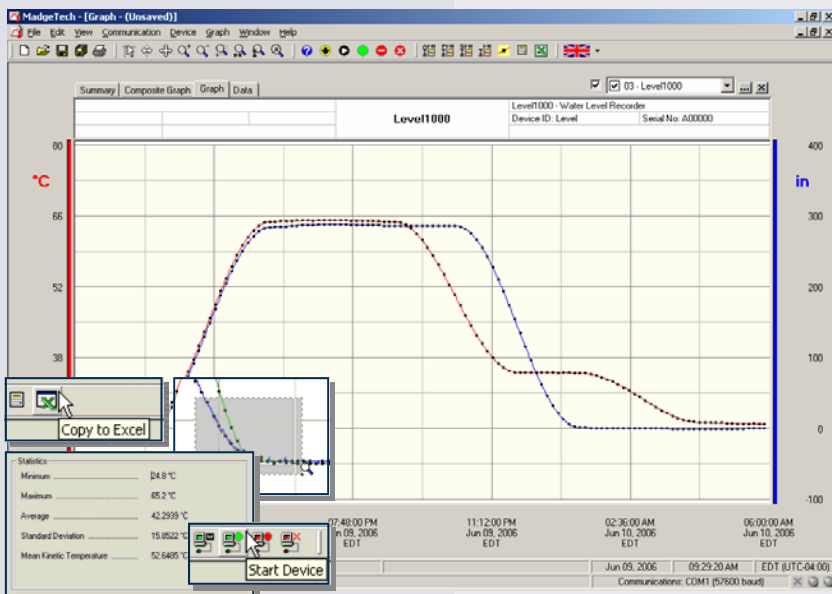
Applications

- Water level monitoring
- Environmental studies
- Waste water treatment
- Flood analysis
- Groundwater monitoring
- Irrigation canals
- Lake and wetland studies
- Storm water studies
- Landfill and hazardous site analysis

The Level1000 is a battery powered, stand alone, submersible



water level and temperature recorder. This is an all-in-one compact, portable, easy to use device that will measure and record up to 16,383 measurements. The storage medium is non-volatile solid state memory, providing maximum data security even if the battery becomes discharged. The device can be started and stopped directly from your computer and its small size allows it to fit almost anywhere. The Level1000 makes data retrieval quick and easy. Simply plug it into an empty COM or USB port and our user-friendly software does the rest.



MadgeTech Data Recorder Software displays water level and temperature data in an easy to use graph.

The Windows®-based software package allows the user to effortlessly collect, display and analyze data. A variety of powerful tools allow you to examine, export, and print professional looking data with just a click of the mouse.

Click [MadgeTech Software](#) for more information or to download the software.

LEVEL1000 SPECIFICATIONS*

Temperature Sensor: Semiconductor
Temperature Range: -40 to +80°C
Temperature Resolution: 0.1°C
Calibrated Accuracy: ±0.5°C (0 to +50°C)

Pressure Sensor: Semiconductor strain gauge
Media Compatibility: Must be compatible with 303 stainless steel
Nominal Range: 0 to 30'
Measurement Range: 0 to 100'
Resolution: 0.05"
Calibrated Accuracy: Nominal range ±0.3% max @ 25 °C
Response Time: 90% change in 1ms
Repeatability: ±0.5%FSR; ±0.2% typical
Proof Pressure: 90 PSIA
Memory: 16,383 readings per channel (32,766 total readings)

Real Time Recording: May be used with PC to monitor and record data in real time

Reading Interval: 1 reading every 2 seconds to 1 every 12 hours
Start Time: Software programmable start time and date, up to six months in advance
Calibration: Digital calibration through software
Calibration Date: Automatically recorded within device
Power: 3.6V lithium battery included
Battery Life: 1 year typical at 25°C
Data Format: Date and time stamped °C, °F, K, °R; PSI, inches, feet, millimeters, centimeters, meters (of water column)
Time Accuracy: ±1 minute/month (RS232 cable not in use)
Computer Interface: PC serial or USB (interface cable required); 2,400 baud
Software: Windows 95/98/ME/NT/2000/XP based software
Operating Environment: -40 to +80°C, 0 to 100%RH
Dimensions: 5.7" x 1.25" dia. (145mm x 32mm)
Weight: 8 oz (220 g)
Approvals: CE

BATTERY WARNING: RISK OF FIRE OR EXPLOSION. DO NOT RECHARGE, FORCE OPEN, HEAT OR DISPOSE OF IN FIRE.

SOFTWARE FEATURES

<p>Multiple Graphs: Simultaneously analyze data from several units or deployments; easily switch to a single data series</p> <p>Graphical Cursor: One click displays readings by time, value, parameter or sample number</p> <p>Data Table: Instantly access tabular view for detailed dates, times, values, and annotations</p> <p>Scaling Options: Autoscale function fits data to the screen, or allows user to manually enter their own values</p> <p>Formatting Options: Change colors, line styles, plotting options, show or hide channels quickly</p>	<p>Statistics: Calculate averages, min, max, standard deviation, and mean kinetic temperature with the touch of a button</p> <p>Export Data: Export data in a variety of common formats, or switch to Excel® with a single click</p> <p>Calibration: Automatically calculate and store calibration parameters</p> <p>Logger Configuration: Easy set up and launch of data loggers with immediate or delayed start, preferred sample rate, and device ID</p> <p>Communications: Automatically sets up communications port, or lets user select configuration</p>
--	--

*SPECIFICATIONS ARE SUBJECT TO CHANGE WITHOUT NOTICE. SPECIFIC WARRANTY AND REMEDY LIMITATIONS APPLY. CALL 1-603-456-2011 OR GO TO WWW.MADGETECH.COM FOR DETAILS.

ORDERING INFORMATION

Model	Description	Price (U.S.)
LEVEL1000	Vented Water Level and Temperature Recorder	\$649.00
IFC110	Software, manual and RS232 interface cable	\$99.00
IFC200	Software, manual and USB interface cable	\$119.00
NIST	N.I.S.T. Calibration Certificate	Call for Pricing
TL-2150	Replacement battery for Level1000	\$10.00

For Quantity Discounts call 603-456-2011 or email sales@madgetech.com

ASK ABOUT OUR OTHER DATA RECORDERS

Temperature	Pulse/Event/State
Humidity	Low Level Current
Pressure	Low Level Voltage
pH	RF Transmitters
Level	Intrinsically Safe
Shock	Spectral Vibration

