

Features

- Reusable
- Submersible
- Programmable start time
- User-friendly
- Low cost
- 0 to 60°C temperature range
- ±0.5°C accuracy
- 0.1°C resolution

Applications

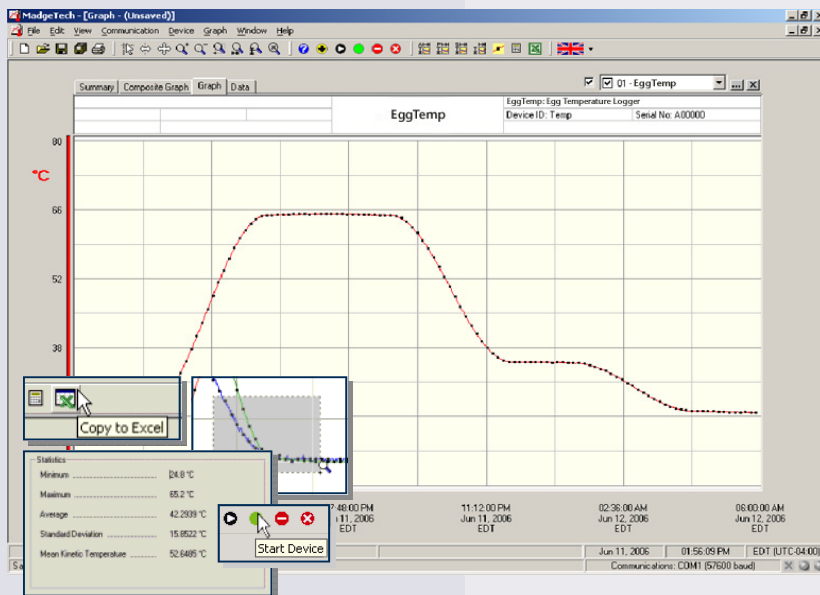
- Egg shipment
- Egg storage
- Hatcheries

MadgeTech's EggTemp is specifically designed to measure and record the temperature of eggs during shipping, storage and incubation. The logger thermally responds to an environment the same way a real egg does, simulating the temperature experience of the actual product.



The EggTemp is submersible and can measure temperatures up to 60°C. It has a user replaceable battery, that typically lasts up to 1 year. The nonvolatile memory can hold up to 32,767 readings and will retain data even if the battery becomes discharged.

MadgeTech's data logger software offers an easy way to analyze data. Data can be viewed in Celsius or Fahrenheit, and in graph, summary or data formats. For further analysis data can also be exported to Excel.



MadgeTech Data Recorder Software displays temperature data in an easy to use graph.

The Windows®-based software package allows the user to effortlessly collect, display and analyze data. A variety of powerful tools allow you to examine, export, and print professional looking data with just a click of the mouse.

Click [MadgeTech Software](#) for more information or to download the software.

EGGTEMP SPECIFICATIONS*

Temperature Sensor: Internal Semiconductor

Temperature Range: 0 to +60°C

Temperature Resolution: 0.1°C

Calibrated Accuracy: ±0.5°C

Alarm: Programmable high and low limits; Alarm is activated when temperature reaches or exceeds set limits.

Activity Indicator: Green LED blinks to indicate device has been started, red LED blinks if an alarm condition exists.

Calibration: Digital calibration through software

Calibration Date: Automatically recorded within device

Real Time Recording: May be used with PC to monitor and record data in real time

Memory: 32,767 readings

Reading Rate: 1 reading every 2 seconds to 1 every 12 hours

Start Modes: Software programmable immediate start or delay start up to six months in advance

Data Format: Date and time stamped °C, °F, K, °R

Battery Type: 2 - 1.55V SR1154W batteries included; **user replaceable**

Battery Life: 1 year typical at 25°C, 1 minute reading intervals

Time Accuracy: ±1 minute/month at 20°C

Computer Interface: PC serial or USB (interface cable required); 38,400 baud

Software: Windows 95/98/ME/NT/2000/XP/Vista based software

Operating Environment: 0 to +60°C, 0 to 100%RH

Submersible: Up to 150 ft., IP68

Dimensions: 2.25" X 1.68" dia. (57.15mm x 42.67mm dia.)

Weight: 2.02 oz (60 g)

Material: Enclosure: HDPE Logger: 303 Stainless Steel

Approvals: CE Compliant

BATTERY WARNING: RISK OF FIRE AND BURNS. DO NOT RECHARGE, SHORT, DISASSEMBLE, HEAT ABOVE 100°C OR INCINERATE.

SOFTWARE FEATURES

Multiple Graphs: Simultaneously analyze data from several units or deployments; easily switch to a single data series

Real-Time Recording: Collect and display data in real-time while continuing to log

Graphical Cursor: One click displays readings by time, value, parameter or sample number

Data Table: Instantly access tabular view for detailed dates, times, values, and annotations

Scaling Options: Autoscale function fits data to the screen, or allows user to manually enter their own values

Formatting Options: Change colors, line styles, plotting options, show or hide channels quickly

Statistics: Calculate averages, min, max, standard deviation, and mean kinetic temperature with the touch of a button

Export Data: Export data in a variety of common formats, or switch to Excel® with a single click

Calibration: Automatically calculate and store calibration parameters

Logger Configuration: Easy set up and launch of data loggers with immediate or delayed start, preferred sample rate, and device ID

Communications: Automatically sets up communications port, or lets user select configuration

Printing: Automatically print graphical or tabular data

*SPECIFICATIONS ARE SUBJECT TO CHANGE WITHOUT NOTICE. SPECIFIC WARRANTY AND REMEDY LIMITATIONS APPLY. CALL 1-603-456-2011 OR GO TO WWW.MADGETECH.COM FOR DETAILS.

ORDERING INFORMATION

<u>Model</u>	<u>Description</u>	<u>Price (U.S.)</u>
EGGTEMP	EggTemp, egg temperature data logger	\$140.00
IFC102	Software, manual and RS232 interface cable for Micro Series.	\$99.00
IFC202	Software, manual and USB interface cable for Micro Series.	\$119.00
NIST	N.I.S.T. Calibration Certificate	Call for Pricing
SR1154	Replacement battery for the EggTemp	\$5.00

Authorized Distributor **Optimum Energy Products Ltd.**

Website: www.dataloggerstore.com

Email: info@dataloggerstore.com

Toll free: 1.877.766.5412

ASK ABOUT OUR OTHER DATA RECORDERS

Temperature	Pulse/Event/State
Humidity	Low Level Current
Pressure	Low Level Voltage
pH	RF Transmitters
Level	Intrinsically Safe
Shock	Spectral Vibration
LCD Display	

