

## Features

- Reusable
- Programmable start time
- User-friendly
- Low cost
- 0 to 60°C temperature range and 0 to 95% humidity
- $\pm 0.5^{\circ}\text{C}$  and  $\pm 3.0\% \text{RH}$  accuracy
- $0.1^{\circ}\text{C}$  and  $0.5\% \text{RH}$  resolution

## Applications

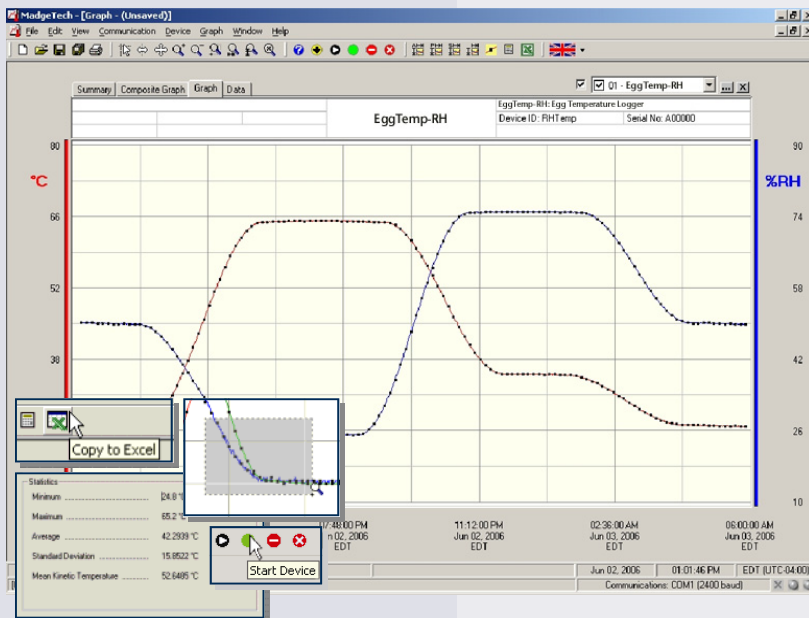
- Egg shipment
- Egg storage
- Hatcheries

MadgeTech's EggTemp-RH is specifically designed to measure and record the humidity and temperature of eggs during shipping, storage and incubation. The logger thermally responds to an environment the same way a real egg does, simulating the humidity and temperature experience of the actual product.



The EggTemp-RH can measure 0 to 95%RH and up to 60°C. It has a user replaceable battery, that typically lasts up to 1 year. The nonvolatile memory can hold up to 32,767 readings and will retain data even if the battery becomes discharged.

MadgeTech's data logger software offers an easy way to analyze data. Data can be viewed in Celsius or Fahrenheit, and in graph, summary or data formats. For further analysis data can also be exported to Excel.



## MadgeTech Data Recorder Software

displays temperature and humidity data in an easy to use graph.

The Windows<sup>®</sup>-based software package allows the user to effortlessly collect, display and analyze data. A variety of powerful tools allow you to examine, export, and print professional looking data with just a click of the mouse.

Click [MadgeTech Software](#) for more information or to download the software.

## EGGTEMP-RH SPECIFICATIONS\*

<b>Temperature Sensor:</b> Semiconductor	<b>Memory:</b> 16,383 readings per channel; 32,766 total readings
<b>Temperature Range:</b> 0 to +60°C	<b>Reading Rate:</b> 1 reading every 2 seconds to 1 every 12 hours
<b>Temperature Resolution:</b> 0.1°C	<b>Time Accuracy:</b> ±1 minute/month @ 20°C
<b>Calibrated Accuracy:</b> ±0.5°C	<b>Data Format:</b> Date and time stamped °C, °F, K, °R; %RH, mg/ml water vapor concentration
<b>Humidity Sensor:</b> Semiconductor	<b>Battery Type:</b> 2 - 1.55V SR1154W batteries included, <b>user replaceable</b>
<b>Humidity Range:</b> 0 to 95%RH	<b>Battery Life:</b> 1 year typical (15 minute reading rate, 25 °C)
<b>Humidity Resolution:</b> 0.5%RH	<b>Activity Indicator:</b> Green LED blinks every 15 seconds to indicate device has been started
<b>Calibrated Accuracy:</b> ±3.0%RH (±2.0%RH typical @ 25°C)	<b>Temperature Alarm:</b> Programmable temperature alarm with high and low limits selectable in software; when logged data reaches or exceeds either limit, the red LED blinks every three seconds
<b>Specified Accuracy Range:</b> +10 to +40°C, 10 to 80%RH	<b>Computer Interface:</b> PC serial or USB (interface cable required) 38,400 baud
<b>Response Time:</b> 90% change in 60 seconds in slow moving air	<b>Software:</b> Windows 95/98/ME/NT/2000/XP/Vista based software
<b>Calibration:</b> Digital calibration through software	<b>Operating Environment:</b> 0 to +60°C, 0 to 95%RH non-condensing
<b>Start Modes:</b> Software programmable immediate start or delay start up to six months in advance	<b>Dimensions:</b> 2.25" X 1.68" dia. (57.15mm x 42.67mm dia.)
<b>Real Time Recording:</b> May be used with PC to monitor and record data in real time	<b>Weight:</b> 2.02 oz (60 g)
	<b>Material:</b> Enclosure: HDPE Logger: 303 Stainless Steel
	<b>Approvals:</b> CE

**BATTERY WARNING:** DO NOT DISPOSE OF IN FIRE OR RECHARGE—MAY EXPLODE OR LEAK AND CAUSE PERSONAL INJURY.

## SOFTWARE FEATURES

<b>Multiple Graphs:</b> Simultaneously analyze data from several units or deployments; easily switch to a single data series	<b>Statistics:</b> Calculate averages, min, max, standard deviation, and mean kinetic temperature with the touch of a button
<b>Real-Time Recording:</b> Collect and display data in real-time while continuing to log	<b>Export Data:</b> Export data in a variety of common formats, or switch to Excel® with a single click
<b>Graphical Cursor:</b> One click displays readings by time, value, parameter or sample number	<b>Calibration:</b> Automatically calculate and store calibration parameters
<b>Data Table:</b> Instantly access tabular view for detailed dates, times, values, and annotations	<b>Logger Configuration:</b> Easy set up and launch of data loggers with immediate or delayed start, preferred sample rate, and device ID
<b>Scaling Options:</b> Autoscale function fits data to the screen, or allows user to manually enter their own values	<b>Communications:</b> Automatically sets up communications port, or lets user select configuration
<b>Formatting Options:</b> Change colors, line styles, plotting options, show or hide channels quickly	<b>Printing:</b> Automatically print graphical or tabular data

\*SPECIFICATIONS ARE SUBJECT TO CHANGE WITHOUT NOTICE. SPECIFIC WARRANTY AND REMEDY LIMITATIONS APPLY. CALL 1-603-456-2011 OR GO TO WWW.MADGETECH.COM FOR DETAILS.

## ORDERING INFORMATION

Model	Description	Price (U.S.)
EGGTEMP-RH	EggTemp-RH, egg temperature and humidity data logger	\$179.00
IFC102	Software, manual and RS232 interface cable	\$99.00
IFC202	Software, manual and USB interface cable	\$119.00
NIST	N.I.S.T. Calibration Certificate	Call for Pricing
SR1154	Replacement battery for the EggTemp-RH	\$5.00

### ASK ABOUT OUR OTHER DATA RECORDERS

Temperature	Pulse/Event/State
Humidity	Low Level Current
Pressure	Low Level Voltage
pH	RF Transmitters
Level	Intrinsically Safe
Shock	Spectral Vibration
LCD Display	

Authorized Distributor

### Optimum Energy Products Ltd.

www.dataloggerstore.com info@dataloggerstore.com 1.877.766.5412

