

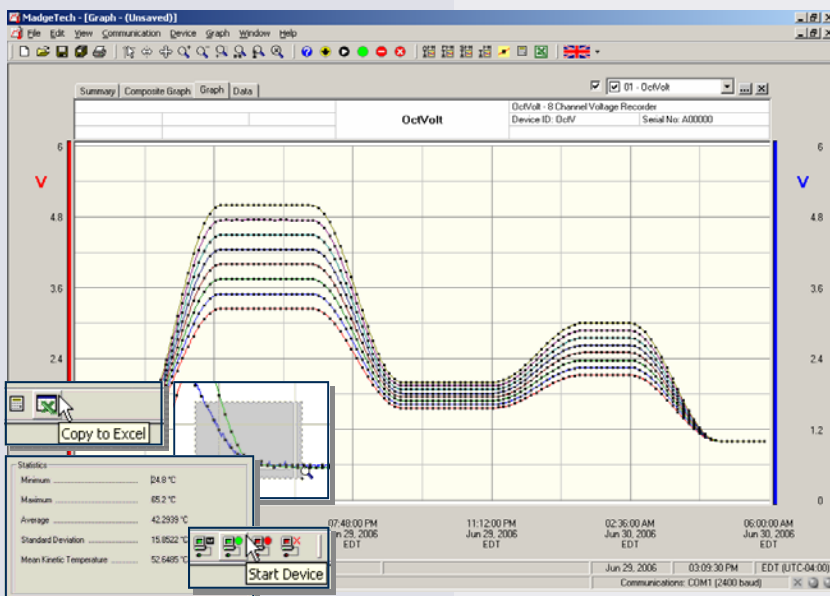
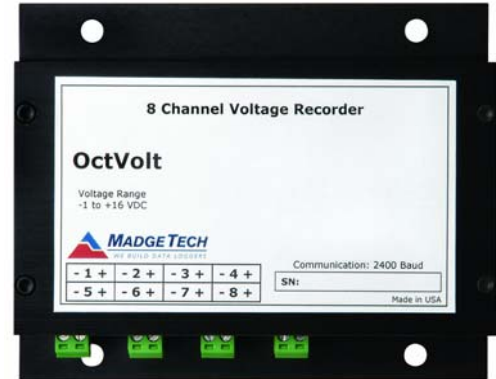
Features

- Real-time operation
- Programmable engineering units
- Low cost
- Compact
- Miniature size
- User-friendly
- Programmable start time
- Reusable

Applications

- Low level signal monitoring
- Medical/Pharmaceutical
- Battery studies
- Power supply monitoring
- Process plants
- Environmental studies
- Research and development
- Replace costly strip chart recorders

The OctVolt is an eight channel, battery powered, stand alone voltage recorder. This is an all-in-one compact, portable, easy to use device that will measure and record up to 16,383 measurements per channel. The storage medium is non-volatile solid state memory, providing maximum data security even if the battery becomes discharged. The device can be started and stopped directly from your computer and its small size allows it to fit almost anywhere. The OctVolt makes data retrieval quick and easy. Simply plug it into an empty COM or USB port and our user-friendly software does the rest.



OctVolt data recorder

MadgeTech's Data Recorder Software is an easy to use Windows®-based software package that allows the user to effortlessly collect, display and analyze data. A variety of powerful tools allow you to examine, export, and print professional looking data with just a click of the mouse.

For more information about MadgeTech Recorders or to demo our software, visit us online at:
www.madgetech.com

OCTVOLT SPECIFICATIONS*

Input Connection:	8 removable screw terminals		
Model:	2.5V	15V	30V
Voltage Range:	-0.25 to +2.75	-1.0 to +16.0	-2.0 to +32.0
Voltage Resolution:	0.1mV	0.5mV	1.0mV
Calibrated Accuracy:	±0.01 (%FSR)	±0.10 (%FSR)	±0.10 (%FSR)
Input Impedance:	>1kΩ*	>10kΩ	>10kΩ
Overload Protection:	±5V	±30V	± 48V
Temperature Coefficient:	< 25ppm/°C	< 250ppm/°C	< 250ppm/°C
Analog Conversion Time:	133ms		
Frequency Rejection:	60Hz		
Specified Accuracy Range:	Nominal range @ 25°C		
Engineering Units:	User may define units up to 10 characters in length. This value is stored within the device.		
Scale Factor:	User may program any desired scaling factor from ±1.000E-31 to ±9.999E+31. The scaling factor is stored within the device.		
Start Time:	Software programmable start time and date, up to six months in advance		

Memory:	16,383 readings per channel (131,068 total memory)
Reading Interval:	1 reading every second to 1 every 12 hours
Real Time Recording:	May be used with PC to monitor and record data in real time
Calibration:	Digital calibration through software
Calibration Date:	Automatically recorded within device
Power:	9V lithium or alkaline battery included
User Replaceable Battery:	1 year typical
Data Format:	Date and time stamped V, mV, μV, engineering units specified through software
Time Accuracy:	±1 minute/month (at 20 °C, RS232 cable not in use)
Computer Interface:	PC serial or USB (interface cable required); 2,400 baud
Software:	Windows 95/98/ME/NT/2000/XP based software
Operating Environment:	-20°C to +60°C, 0 to 95%RH non-condensing
Dimensions:	3.5" x 4.4" x 1.5" (89mm x 112mm x 39mm)
Weight:	17 oz (480 g)

*Input impedance is greater than 1 MΩ during acquisition for the OCTVOLT-2.5

BATTERY WARNING: DISCARD USED BATTERY PROMPTLY. KEEP OUT OF REACH OF CHILDREN. DO NOT DISPOSE OF IN FIRE, RECHARGE, PUT IN BACKWARDS, DISASSEMBLE, OR MIX WITH OTHER BATTERY TYPES. MAY EXPLODE, FLAME OR LEAK AND CAUSE PERSONAL INJURY.

SOFTWARE FEATURES

Multiple Graphs:	Simultaneously analyze data from several units or deployments; easily switch to a single data series	Statistics:	Calculate averages, min, max, standard deviation, and mean kinetic temperature with the touch of a button
Graphical Cursor:	One click displays readings by time, value, parameter or sample number	Export Data:	Export data in a variety of common formats, or switch to Excel® with a single click
Data Table:	Instantly access tabular view for detailed dates, times, values, and annotations	Calibration:	Automatically calculate and store calibration parameters
Scaling Options:	Autoscale function fits data to the screen, or allows user to manually enter their own values	Logger Configuration:	Easy set up and launch of data loggers with immediate or delayed start, preferred sample rate, and device ID
Formatting Options:	Change colors, line styles, plotting options, show or hide channels quickly	Communications:	Automatically sets up communications port, or lets user select configuration

*SPECIFICATIONS ARE SUBJECT TO CHANGE WITHOUT NOTICE. SPECIFIC WARRANTY AND REMEDY LIMITATIONS APPLY. CALL 1-603-456-2011 OR GO TO WWW.MADGETECH.COM FOR DETAILS.

ORDERING INFORMATION

<u>Model</u>	<u>Description</u>	<u>Price (U.S.)</u>
OCTVOLT-100mV	±100mV 8-Channel Voltage Recorder	\$999.00
OCTVOLT-2.5V	±2.5V 8-Channel Voltage Recorder	\$999.00
OCTVOLT-15V	±15V 8-Channel Voltage Recorder	\$999.00
OCTVOLT-30V	±30V 8-Channel Voltage Recorder	\$999.00
IFC110	Software, manual and RS232 interface cable	\$99.00
IFC200	Software, manual and USB interface cable	\$119.00
NIST	N.I.S.T. Calibration Certificate	Call for Pricing
U9VL-J	Replacement battery for OctVolt	\$15.00

ASK ABOUT OUR OTHER DATA RECORDERS

Temperature	Pulse/Event/State
Humidity	Low Level Current
Pressure	Low Level Voltage
pH	RF Transmitters
Level	Intrinsically Safe
Shock	Spectral Vibration



For Quantity Discounts call 603-456-2011 or email sales@madgetech.com