

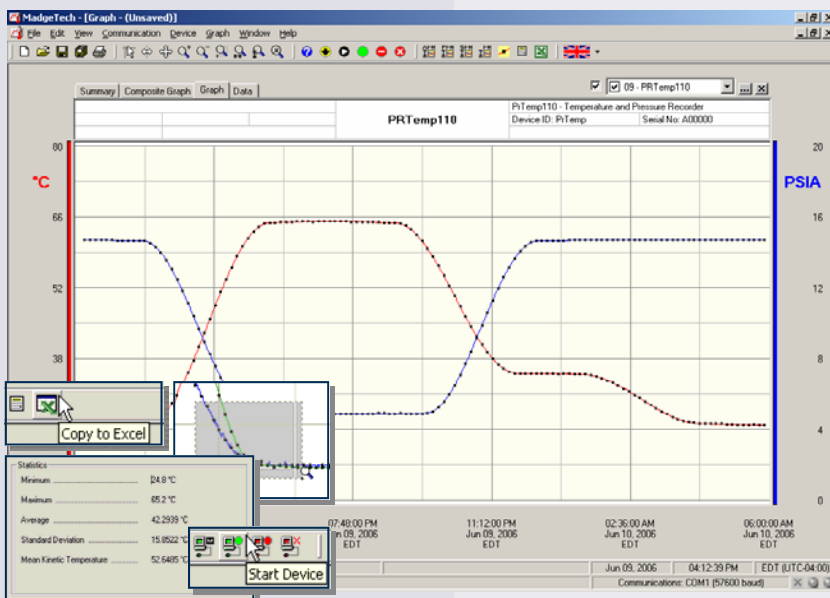
Features

- 10 year battery life
- High speed download
- N.I.S.T. traceable
- Real-time operation
- Low cost
- Programmable start time
- Reusable
- Miniature size
- User-friendly

Applications

- Shipping live cargo
- Barometry
- Altitude validation
- Food outgassing
- Warehouse monitoring
- Pneumatics
- Medical/Pharmaceutical
- Museum monitoring
- Environmental studies
- HVAC
- Refrigeration

The PRTemp110 is a miniature, battery powered, stand alone pressure and temperature recorder. The PRTemp110 features a real-time clock module that extends the battery life to > 10 years and allows for high speed downloads. This is an all-in-one compact, portable, easy to use device that will measure and record up to 16,383 measurements per channel. The storage medium is non-volatile solid state memory, providing maximum data security even if the battery becomes discharged. The device can be started and stopped directly from your computer and its small size allows it to fit almost anywhere. The PRTemp110 makes data retrieval quick and easy. Simply plug it into an empty COM or USB port and our user-friendly software does the rest.



MadgeTech Data Recorder Software

displays pressure and temperature data in an easy to use graph.

The Windows®-based software package allows the user to effortlessly collect, display and analyze data. A variety of powerful tools allow you to examine, export, and print professional looking data with just a click of the mouse.

Click [MadgeTech Software](#) for more information or to download the software.

PRTEMP110 SPECIFICATIONS*

Temperature Sensor: Semiconductor	Memory: 16,383 readings per channel (32,766 total readings); software configurable memory wrap
Temperature Range: -40 to +80°C	Reading Interval: 1 reading every 2 seconds to 1 every 12 hours
Temperature Resolution: 0.1°C	Calibration: Digital calibration through software
Calibrated Accuracy: ±0.5°C(0 to +50°C)	Calibration Date: Automatically recorded within device
Pressure Sensor: Semiconductor Strain Gauge	Power: 3.6V lithium battery included
Pressure Range: 0 to 30PSIA	*User Replaceable Battery: 10 years (15 minute reading rate, 25°C)
Pressure Resolution: 0.002PSIA	Data Format: Date and time stamped °C, °F, K, °R ; PSIA, inHg, mmHg, bar, atm, Torr, Pa, kPa, MPa, altitude
Calibrated Accuracy: ±1.0%FSR at 25°C; ±0.2% typical	Time Accuracy: ±1 minute/month (at 20 to 30°C)
Pressure Response Time: 90% of change in 1 ms	Computer Interface: PC serial or USB (interface cable required); 57,600 baud
Repeatability: ±0.5%FSR; ±0.2% typical	Software: Windows 95/98/ME/NT/2000/XP based software
Start Time: Software programmable Start time and date, up to six months in advance	Operating Environment: -40 to +80 °C, 0 to 95%RH non-condensing
Real Time Recording: May be used with PC to monitor and record data in real time	Dimensions: 1.7" x 2.3" x 0.9" (44mm x 59mm x 23mm)
	Weight: 2 oz (60 g)
	Approvals: CE

BATTERY WARNING: FIRE, EXPLOSION, AND SEVERE BURN HAZARD.
DO NOT RECHARGE, DISASSEMBLE, HEAT ABOVE 212°F,
INCINERATE OR EXPOSE CONTENTS TO WATER.

SOFTWARE FEATURES

Multiple Graphs: Simultaneously analyze data from several units or deployments; easily switch to a single data series	Statistics: Calculate averages, min, max, standard deviation, and mean kinetic temperature with the touch of a button
Graphical Cursor: One click displays readings by time, value, parameter or sample number	Export Data: Export data in a variety of common formats, or switch to Excel® with a single click
Data Table: Instantly access tabular view for detailed dates, times, values, and annotations	Calibration: Automatically calculate and store calibration parameters
Scaling Options: Autoscale function fits data to the screen, or allows user to manually enter their own values	Logger Configuration: Easy set up and launch of data loggers with immediate or delayed start, preferred sample rate, and device ID
Formatting Options: Change colors, line styles, plotting options, show or hide channels quickly	Communications: Automatically sets up communications port, or lets user select configuration

*SPECIFICATIONS ARE SUBJECT TO CHANGE WITHOUT NOTICE.
SPECIFIC WARRANTY AND REMEDY LIMITATIONS APPLY.
CALL 1-603-456-2011 OR GO TO WWW.MADGETECH.COM FOR DETAILS.

ORDERING INFORMATION

Model	Description	Price (U.S.)
PRTEMP110	Pressure and Temperature Recorder	\$329.00
IFC110	Software, manual and RS232 interface cable	\$ 99.00
IFC200	Software, manual and USB interface cable	\$119.00
NIST	N.I.S.T. Calibration Certificate	Call for Pricing
LTC-7PN	Replacement battery for PRTemp110	\$ 10.00

For Quantity Discounts call 603-456-2011 or email sales@madgetech.com

ASK ABOUT OUR OTHER DATA RECORDERS

Temperature	Pulse/Event/State
Humidity	Low Level Current
Pressure	Low Level Voltage
pH	RF Transmitters
Level	Intrinsically Safe
Shock	Spectral Vibration

