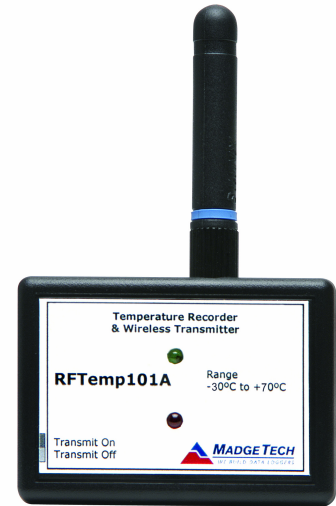


Features

- Multiple transmitter configurations
- Memory wrap around
- Software configurable
- Real-time operation
- Programmable start time
- Miniature size
- User-friendly
- N.I.S.T. traceable

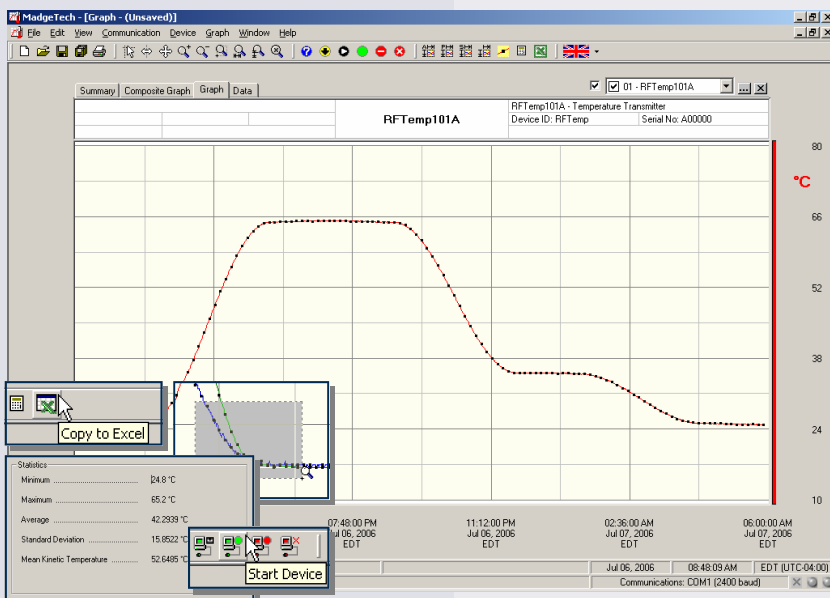
Applications

- Remote data logging
- Warehouse monitoring
- HVAC
- Medical and Pharmaceutical
- Museum monitoring
- Environmental studies
- Replace costly strip chart recorders
- Implement HACCP programs



The RFTEMP101A is a battery powered temperature recorder and wireless transmitter. This is an all-in-one compact, portable, easy to use device that will measure and record up to 8,191 measurements. The RFTEMP101A combines the features from the standard product line and adds the convenience of a wireless transmitter. When enabled, the wireless transmitter will transmit readings back to the host computer where the data can be analyzed in real time. These readings are also logged to the device's memory for added data security. The convenient slide switch allows the transmitter to be turned on or off without affecting the operation of the device.

The device can be started, stopped and configured directly from your computer. Its small size allows it to fit almost anywhere. In addition to the wireless communications, the RFTEMP101A makes data retrieval quick and easy. Simply plug the device into an empty COM port and our user-friendly software will handle the rest.



MadgeTech Data Recorder Software

displays temperature data in an easy to use graph.

The Windows®-based software package allows the user to effortlessly collect, display and analyze data. A variety of powerful tools allow you to examine, export, and print professional looking data with just a click of the mouse.

Click [MadgeTech Software](#) for more information or to download the software.

RFTEMP101A SPECIFICATIONS*

| | |
|---|--|
| Temperature Sensor: Internal Semiconductor | Time Accuracy: ±1 minute/month (at 20 to 30°C) |
| Temperature Range: -30 to +70°C | Computer Interface: PC serial or RS232C COM (interface cable required); 57,600 baud |
| Temperature Resolution: 0.1°C | RF Carrier Frequency: 418 ± 0.075MHz |
| Calibrated Accuracy: ±0.5°C (0 to +50°C) | RF Baud Rate: 4,800 baud |
| Calibration: Digital calibration through software | Output Power: <0dBm typical (<1mW) |
| Calibration Date: Automatically recorded within device | Receiver Sensitivity (RFC101A): -90dBm typical |
| Start Time: Software programmable start time and date, up to six months in advance | Range: Line-of-sight: up to 120 ft., Urban: up to 40 ft. |
| Real Time Recording: May be used with PC to monitor and record data in real time | Approvals: US (FCC), CA (IC) |
| Memory: 8,191 readings; software configurable memory wrap | Power: 3.6V lithium battery included (LTC-7PN) |
| Reading Interval: 1 reading every 30 seconds to 1 every 12 hours | Battery Life: 1 year typical (1 min reading rate @ 25 °C) |
| Data Format: Date and time stamped °C, °F, K, °R | Software: Windows 95/98/ME/NT/2000/XP based software |
| | Operating Environment: -30 to +70°C, 0 to 95%RH non-condensing |
| | Dimensions: 1.7" x 2.3" x 0.8" + 2.0" antenna (44mm x 59mm x 21mm + 51mm antenna) |
| | Weight: 2 oz (60 g) |
| | Materials: ABS plastic |

BATTERY WARNING: FIRE, EXPLOSION, AND SEVERE BURN HAZARD. DO NOT RECHARGE, DISASSEMBLE, HEAT ABOVE 212°F, INCINERATE OR EXPOSE CONTENTS TO WATER.

SOFTWARE FEATURES

| | |
|--|---|
| Multiple Graphs: Simultaneously analyze data from several units or deployments; easily switch to a single data series | Statistics: Calculate averages, min, max, standard deviation, and mean kinetic temperature with the touch of a button |
| Real-Time Recording: Collect and display data in real-time while continuing to log | Export Data: Export data in a variety of common formats, or switch to Excel® with a single click |
| Graphical Cursor: One click displays readings by time, value, parameter or sample number | Calibration: Automatically calculate and store calibration parameters |
| Data Table: Instantly access tabular view for detailed dates, times, values, and annotations | Logger Configuration: Easy set up and launch of data loggers with immediate or delayed start, preferred sample rate, and device ID |
| Scaling Options: Autoscale function fits data to the screen, or allows user to manually enter their own values | Communications: Automatically sets up communications port, or lets user select configuration |
| Formatting Options: Change colors, line styles, plotting options, show or hide channels quickly | Printing: Automatically print graphical or tabular data |

*SPECIFICATIONS ARE SUBJECT TO CHANGE WITHOUT NOTICE. SPECIFIC WARRANTY AND REMEDY LIMITATIONS APPLY. CALL 1-603-456-2011 OR GO TO WWW.MADGETECH.COM FOR DETAILS.

ORDERING INFORMATION

| Model | Description | Price (U.S.) |
|------------|---|------------------|
| RFTEMP101A | Temperature Recorder and Wireless Transmitter | \$199.00 |
| RFC101A | Software, manual, wireless receiver, power supply and RS232 interface cable | \$199.00 |
| IFC110 | Software, manual and RS232 interface cable | \$99.00 |
| NIST | N.I.S.T. Calibration Certificate | Call for Pricing |
| LTC-7PN | Replacement battery for RFTemp101A | \$10.00 |

ASK ABOUT OUR OTHER DATA RECORDERS

| | |
|-------------|--------------------|
| Temperature | Pulse/Event/State |
| Humidity | Low Level Current |
| Pressure | Low Level Voltage |
| pH | RF Transmitters |
| Level | Intrinsically Safe |
| Shock | Spectral Vibration |

For Quantity Discounts call 603-456-2011 or email sales@madgetech.com

