

TEMPRETRIEVERRH

LOW COST TEMPERATURE & HUMIDITY RECORDER

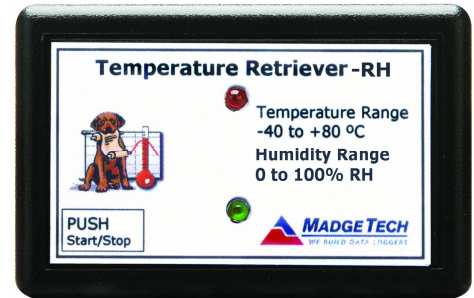
Features

- Low cost
- User-friendly
- Push button start and stop
- LED alarm indication
- User selectable alarm limits
- Programmable start time
- Reusable
- Miniature size
- 38,400 baud offload speed
- CE compliant

Applications

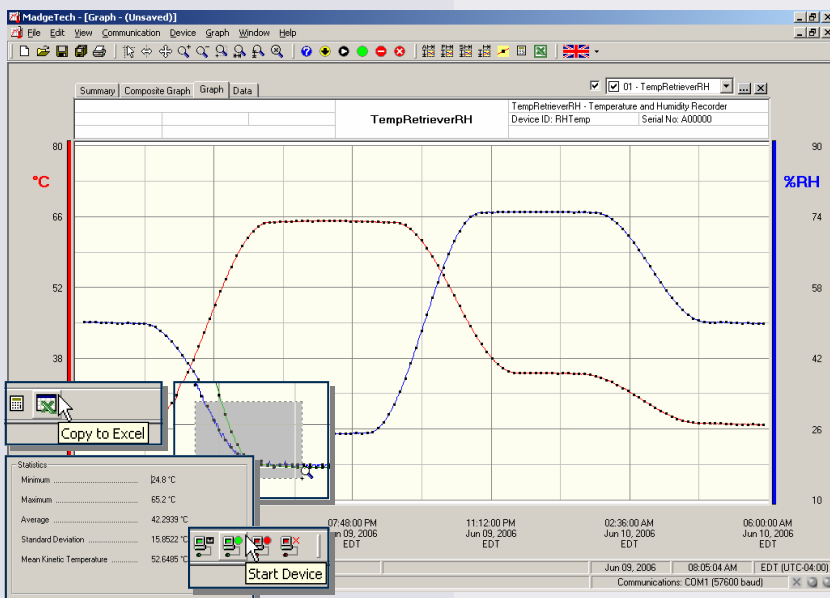
- Implement HACCP programs
- Cold chain monitoring
- Verify products are stored and shipped safely
- Monitor refrigerated cars
- Medical and Pharmaceutical
- Meat aging
- Laboratory
- Research and Development
- Replace costly strip chart recorders

To ensure the quality of perishable goods, temperature and humidity monitoring has become essential in applications such as transportation and storage, horticulture, and heating and ventilation. The TempRetrieverRH makes safeguarding against dangerous environments simple.



The TempRetrieverRH is a low cost, reusable, temperature and humidity recorder. No external probes are required to achieve its high performance as both the humidity and temperature sensors are internal to the device. The device can record up to 16,383 readings in its non-volatile memory and coupled with up to a one year battery life, this makes for the perfect temperature and humidity recorder when keeping down costs is paramount.

The MadgeTech software includes a full host of features that allows the user to set the start method (i.e. pushbutton, delayed start or start now), start date and time, sample rate, high/low alarm limits, 6-character device ID and a 16-character extended ID. Data can be offloaded and displayed in most common temperature and humidity units. The software will also automatically calculate Mean Kinetic Temperature, dew point, water vapor concentration as well as other useful statistics to simplify analysis. For additional custom analysis, the data can be quickly exported into a MS Excel® spreadsheet with the click of a button.



TempRetrieverRH data recorder shows humidity and temperature data.

MadgeTech's Data Recorder Software is an easy to use Windows®-based software package that allows the user to effortlessly collect, display and analyze data. A variety of powerful tools allow you to examine, export, and print professional looking data with just a click of the mouse.

For more information about MadgeTech Recorders or to demo our software, visit us online at:
www.madgetech.com

TEMPRETRIEVERRH SPECIFICATIONS*

Temperature Sensor: Semiconductor	Reading Interval: 1 reading every 5 seconds to 1 every 30 minutes
Temperature Range: -40 to +80°C	Start Time: Programmable start time and date up to 6 months in advance; or external pushbutton
Temperature Resolution: 0.1°C	Time Accuracy: ±2 minute/month at 25°C.
Calibrated Accuracy: ±0.5°C (0 to +50°C)	Data Format: Date and time stamped °C, °F, K, °R; %RH, mg/ml water vapor concentration
Humidity Sensor: Semiconductor	Calibration: Digital calibration through software
Humidity Range: 0 to 95%RH	Calibration Date: Automatically recorded within device
Humidity Resolution: 0.1%RH	Power: 3.6V lithium battery included
Calibrated Accuracy: ±3.0%RH (±2%RH typical at 25°C)	User Replaceable Battery: 1 year typical @ 25°C, 1 minute reading rate
Accuracy Range: +10 to +40°C, 10 to 80%RH	Computer Interface: PC serial or USB (interface cable required); 38,400 baud
Response Time: 90% change in 60 seconds in slow moving air	Software: Windows 95/98/ME/NT/2000/XP based software
Activity Indicator: Green LED blinks every 15 seconds to indicate device has been started.	Operating Environment: -40 to +80°C, 0 to 95%RH non-condensing
Temperature Alarm: Programmable high and low limits; When logged data reaches or exceeds either limit, red LED blinks every three seconds	Dimensions: 1.4" x 2.2" x 0.6" (36mm x 56mm x 16mm)
Memory: 16,383 readings per channel	Weight: 0.9 oz (24 g)
	Approvals: CE

BATTERY WARNING: FIRE, EXPLOSION, AND SEVERE BURN HAZARD. DO NOT RECHARGE, DISASSEMBLE, HEAT ABOVE 212°F, INCINERATE OR EXPOSE CONTENTS TO WATER.

SOFTWARE FEATURES

Multiple Graphs: Simultaneously analyze data from several units or deployments; easily switch to a single data series	Statistics: Calculate averages, min, max, standard deviation, and mean kinetic temperature with the touch of a button
Real-Time Recording: Collect and display data in real-time while continuing to log	Export Data: Export data in a variety of common formats, or switch to Excel® with a single click
Graphical Cursor: One click displays readings by time, value, parameter or sample number	Calibration: Automatically calculate and store calibration parameters
Data Table: Instantly access tabular view for detailed dates, times, values, and annotations	Logger Configuration: Easy set up and launch of data loggers with immediate or delayed start, preferred sample rate, and device ID
Scaling Options: Autoscale function fits data to the screen, or allows user to manually enter their own values	Communications: Automatically sets up communications port, or lets user select configuration
Formatting Options: Change colors, line styles, plotting options, show or hide channels quickly	Printing: Automatically print graphical or tabular data

*SPECIFICATIONS ARE SUBJECT TO CHANGE WITHOUT NOTICE. SPECIFIC WARRANTY AND REMEDY LIMITATIONS APPLY. CALL 1-603-456-2011 OR GO TO WWW.MADGETECH.COM FOR DETAILS.

ORDERING INFORMATION

Model	Description	Price (U.S.)
TEMPRETRIEVERRH	Low cost, Reusable, Humidity and Temperature Recorder	\$99.00
IFC110	Software, manual and RS232 interface cable	\$ 99.00
IFC200	Software, manual and USB interface cable	\$119.00
NIST	N.I.S.T. Calibration Certificate	Call for Pricing
LTC-7PN	Replacement battery for TempRetrieverRH	\$ 10.00

For Quantity Discounts call 603-456-2011 or email sales@madgetech.com

ASK ABOUT OUR OTHER DATA RECORDERS

Temperature	Pulse/Event/State
Humidity	Low Level Current
Pressure	Low Level Voltage
pH	RF Transmitters
Level	Intrinsically Safe
Shock	Spectral Vibration

